



Configuration Guide for the Data Connector

(Revision 1.0 - Aug 2024)

Pegasus Software
Copyright © Pegasus Software. All rights reserved.

Pegasus Software is a trading name of Infor (United Kingdom) Limited. Office Address:
Orion House, Orion Way, Kettering, Northamptonshire, NN15 6PE (Registered Office:
One Central Boulevard, Blythe Valley Park, Shirley, Solihull, England B90 8BG)
Registered in England No. 2766416

Manual published by:

Pegasus Software
Orion House
Orion Way
Kettering
Northamptonshire
NN15 6PE

www.pegasus.co.uk



All rights reserved. No part of this manual or any accompanying programs may be copied, sold, loaned or in any way disposed of by way of trade or for any kind of profit or incentive without the express permission of Pegasus Software in writing, or as specified in the licence agreement which accompanies this manual and associated programs.

Whilst Pegasus Software takes reasonable steps to ensure that the contents of this manual are up to date, and correctly describe the functioning of the programs, neither Pegasus Software nor any of its Partners give any warranty that the manual is error free, nor that the programs will perform all functions stated in the manual. Pegasus Software has a policy of continual improvement of its software and accordingly this manual may describe features which are no longer available in the current release of the software available to customers, or which are proposed for a future release of the software. Under no circumstances will Pegasus Software or any of its Partners have any liability to any customer arising out of any error, omission or inaccuracy in this manual.

All trademarks are acknowledged.

Contents

GUIDE ITERATIONS	4
1. INTRODUCTION	5
2. FOR AUTHORISATION	5
2.1. SAM REPORTING ROLES	6
2.2. REPORTING ROLES.....	7
3. AUTHORISED PERMISSIONS.....	15
3.1. IF THE OPERA USER IS NOT FOUND	15
3.2. ONCE THE OPERA USER IS KNOWN	15
4. THE DATA CONNECTOR FUNCTIONALITY	16
4.1. ODATA FEED.....	16

Guide iterations

A summary of changes per document iteration.

Iteration	Date	Changes
R1.0	Aug 2024	The baselined initial release of the configuration for the Data Connector.

1. Introduction

This guide aims to assist users in configuring the Data Connector to ensure optimal performance and functionality. It provides step-by-step instructions to help you through the configuration process.

NOTE: Follow the successful installation and setup process using the [Installation and Setup guide](#).

Only users who have been set up in Opera 3 SQL SE are displayed in the list. Each user's Windows username must be recorded on the **User Profiles** form in Opera 3 SQL SE to allow access to the Microsoft SQL Server databases.

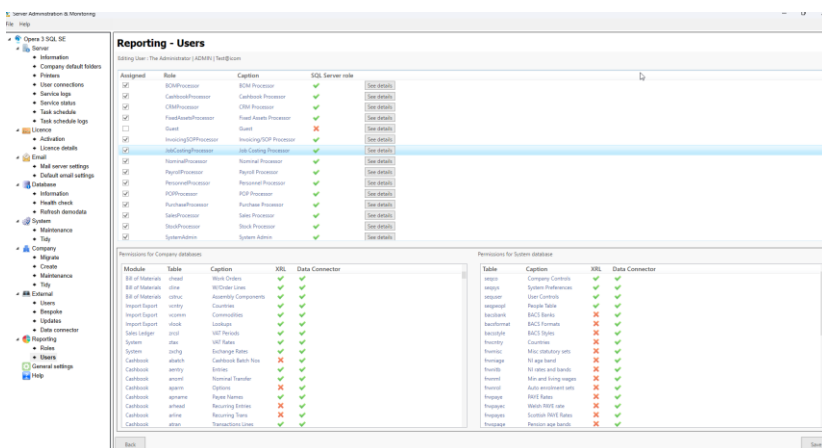
NOTE: Users need to complete the [Configuring and Setting up Security Permissions](#) as instructed in the *Data Connector Installation and Setup Guide*.

This guide assists Manager to configure user access permissions to the Opera SQL SE data tables for reporting purpose.

2. For Authorisation

Determine the required permissions for the user to access companies, and tables.

Navigate to **Reporting > Users** in SAM. Only the roles that are relevant to the applications included in the Opera 3 SQL SE licence are displayed for selection.



You can assign reporting roles using either the **Roles** view or the **Users** view. Both views have the same purpose and create membership of roles in the same way.

Reporting roles is the method by which permissions to Opera 3 SQL SE data in the Data Connector are managed. They are based around data processing in the Opera 3 SQL SE applications, for example:

- Cashbook Processor
- Purchase Ledger Processor' and so on.

Membership of a role allows access to data in the Data Connector for the relevant application in Opera 3 SQL SE.

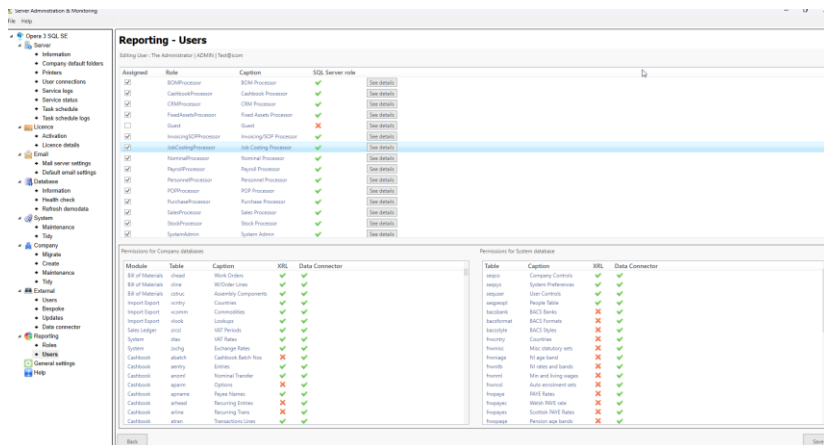
View	Description
Roles	This view can be used to apply a single reporting role for the Data Connector to users.
Users	This view can be used to apply one or more Data Connector reporting roles to a selected user.

NOTE: The **System Admin** role has access to all the tables available to the other roles.

Only the roles that are relevant to the applications included in the Opera 3 SQL SE licence are displayed for selection.

2.1. SAM Reporting Roles

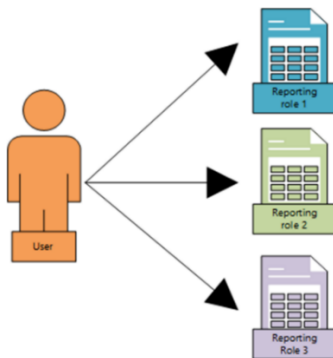
Navigate to **Reporting > Users**. Select a user and click **Edit**. You can now assign roles to that user.



Under **Reporting** on the navigation pane, open the **Users** view.

Use this view to apply one or more reporting roles for the Data Connector to a selected user.

Applying a reporting role will add the user's **Windows username** to the relevant databases in Microsoft SQL Server and assign membership to relevant database roles to provide access to the required tables.



There are a number of reporting roles that are available for reporting with the Data Connector. Each role has access to the data tables for the relevant application. For example, the 'Cashbook Processor' role has access to the data tables used when processing in the Cashbook application, the Purchase Processor has access to the Purchase Ledger tables, and so on.

The **System Admin** role has access to all the data tables for all reporting roles.

Only users who have been set up in Opera 3 SQL SE are displayed in the list - each user's Windows username must be recorded on the **User Profiles** form in Opera 3 SQL SE to allow access to the Microsoft SQL Server databases.

Actions: Apply one or more reporting roles for the Data Connector to an Opera 3 SQL SE user.

An Opera user is displayed on this screen if any of the following conditions are true:

- Windomuser is set in sequer (this is for Data Connector users)
- Lockwuser is set in sequer (this is for domain authentication of Data Connector users)
- There is a “External User” flagged for “Data Connector use” that maps to the Opera user

The grid will indicate what user type(s) they are.

2.2. Reporting Roles

These are the predefined reporting roles for the Data Connector.

BOM Processor

Role	Has access to	Table(s)
BOM Processor	Works Orders	Chead
	Works Order Lines	Cline
	Assembly Components	Cstruc
Import/Export	EC VAT Countries, Commodity Codes, Lookup Tables	Vcntry, vcomm & vlook
Sales Ledger	VAT Periods	Zcrsl
System	Rates and Exchange Rates	Ztax & zxchg
System database	Company Controls, System Preferences & User Controls	Seqco, seqsys & sequer

Cashbook Processor

Role	Has access to	Table(s)
Cashbook Processor	Cashbook Batch Numbers	Abatch
	Cashbook Header Entries and Transaction Lines	Aentry & atran
	Nominal Transfer	Anoml
	Cashbook Options	Aparm
	Payee Names	Apname
	Recurring Cashbook Header Entries & Transaction Lines	Arhead & arline
	Cashbook Types	Atype
Import/Export	EC VAT Countries, Commodity Codes, Lookup Tables	Vcntry, vcomm & vlook
Sales Ledger	VAT Periods	Zcrsl
System	Rates and Exchange Rates	Ztax & zxchg
System database	Company Controls, System Preferences & User Controls	Seqco, seqsys & sequer

CRM Processor

Role	Has access to	Table(s)
CRM Processor	Activities	Dmactiv
	Contact Addresses	Dmaddr
	Company Details	Dmcomp
	Contact Details	Dmcont
	Group	dmgroup
	Referral Methods	Dmreff
	Sales Projects	Dmsproj
Import/Export	EC VAT Countries, Commodity Codes, Lookup Tables	Vcntry, vcomm & vlook
Sales Ledger	VAT Periods	Zcrsl
System	Rates and Exchange Rates	Ztax & zxchg
System database	Company Controls, System Preferences & User Controls	Seqco, seqsys & sequer

Fixed Assets Processor

Role	Has access to	Table(s)
Fixed Assets Processor	Assets	Fasset
	Asset Details	Fassex
	Asset Locations	Fasslc
	Categories	Fcatg
	Category Groups	Fgroup
	Insurance Companies	Finsr
	Locations	Floc
	Nominal Transfer	Fnoml
	Options	Fparm
	Transactions	Ftran
	Transactions Extra	Ftrex
Import/Export	EC VAT Countries, Commodity Codes, Lookup Tables	Vcntry, vcomm & vlook
Sales Ledger	VAT Periods	Zcrsl
System	Rates and Exchange Rates	Ztax & zxchg
System database	Company Controls, System Preferences & User Controls	Seqco, seqsys & seuser

InvoicingSOP Processor

Role	Has access to	Table(s)
InvoicingSOP Processor	Stock Categories	Ccatg
Stock Control	Stock Price Details	Cdetl
	Stock Discount Matrix	Cdisc
	Stock Profiles	Cfact
	Stock Goods Received Notes Header and Detail Lines	Cghead & cgline
	Stock Goods Received Notes Lines matched to Purchase Orders	Cmatch
	Stock records	Cname
	Return to Vendor Header and Detail Lines	Crhead & crline
	Stocktake Profiles	Ctakepr
Invoicing/SOP	Allocations	Ialloc
	Headers	Ihead
	Options	Iparm
	Transactions	Itran
Sales Ledger	Debtor History	Shist
	Sales Ledger Lookups	Slook
	Customer records	Sname
	Customer Profiles	Sprfls
	Sales Codes	Ssale
	Customer Terms Profiles	Sterms
	Sales Groups	Swxgrp
Import/Export	EC VAT Countries, Commodity Codes, Lookup Tables	Vcntry, vcomm & vlook
Sales Ledger	VAT Periods	Zcrsl
System	Contacts, Notes, Rates and Exchange Rates	Ztax & zxchg
System database	Company Controls, System Preferences & User Controls	Seqco, seqsys & seuser

Job Processor

Role	Has access to	Table(s)
Job Processor	Batch Headers	Jbhead
	Batch Details	Jbline
	Cost Codes	Jccode
	Cost Code Rates	Jccost
	Job Headers	Jchead
	Job Detail	Jcline
	Contracts	Jcntr
	Costing Types	Jctype
	Department	Jdept
	Estimate Headers	Jehead
	Estimate Details	Jeline
	Parameters	Jparm
	Framework	Jphead
	Framework Details	Jpline
	Rates	Jrate
	Subcontractors	Jskon
	Subcontractors Transactions	Jsctr
	Job Costing Views	Jview
	Work In Progress	Jwipr
Import/Export	EC VAT Countries, Commodity Codes, Lookup Tables	Vcntry, vcomm & vlook
Sales Ledger	VAT Periods	Zcrsl
System	Rates and Exchange Rates	Ztax & zchg
System database	Company Controls, People Table, System Preferences & User Controls	Seqco, seqsys & seuser

Nominal Processor

Role	Has access to	Table(s)
Nominal Processor	Accounts	Nacnt
	Banks	Nbank
	Budgets	Nbudg
	NL Calendar Details	Nclnnd
	NL Calendar Header	Nclndh
	Cost Centres	Ncntr
	Nominal Transaction Details	Ndetail
	Pre-Journals	Ndetl
	Distribution	Ndist
	Factors	Nfact
	Pre-Journal Headers	Nhead
	Nominal History	Nhist
	Journal Memo	Njmemo
	Nominal Department	Njob
	Matrix Report Detail	Nmrdet
	Management Reports	Nmrep
	Management Report	Nmrhed
	Options	Nparm
	Nominal Project	Nproj
	Report Key	Nrpkey
	Sub Types	Nsubt
	Transactions	Ntran
	Types	Ntype
	Nominal VAT Transfer	Nvat

	Nominal View	Nview
Import/Export	EC VAT Countries, Commodity Codes, Lookup Tables	Vcntry, vcomm & vlook
Sales Ledger	VAT Periods	Zcrsl
System	Notes, Rates and Exchange Rates	Ztax & zxchg
System database	Company Controls, System Preferences & User Controls	Seqco, seqsys & sequer

Payroll Processor

Role	Has access to	Table(s)
Payroll Processor	Bank Details	Wbank
	Calculation Report	Wcarp
	Payroll Calendar	Wclndr
	Coinage	Wcnvd
	Company Online Filing	Wconf
	Company Car Benefits	Wcrbnft
	Controls	Wctrl
	Cover Letter Content	Wcvrlett
	Departments	Wdept
	Employee Attachment Orders	Weaos
	P60 History	Webp60
	EE NI Archive	Weiarc
	EE Main Archive	Wenarc
	Payroll NICs	Wenic
	Employee Auto Enrolment	Wenrol
	Employee Pension Details	Wepen
	Employee Pension Held Contributions	Wepfld
	SMP Employee Details	Wesmp
	Paternity/Adoption Employee Details	Wespp
	SSP Employee Qualifying Days	Wesqds
	SSP Employee Daily Detail	Wesspt
	Employee Tax Credits	Wetxc
	Funding Details	Wfund
	Group Archive	Wgarc
	Group Online Filing	Wgonf
	Groups	Wgrup
	History	Whist
	Transaction History	Whtran
	General Employer Details	Wmisc
	Employee	Wname
	NI Tables	Wnitb
	Nominal Transfer	Wnoml
	Employee Extra	Wnextra
	Employer Allowance	Wp32ea
	P32 Payments	Wp32py
	P32 Transactions	Wp32tr
	Options	Wparm
	Payments & Deductions	Wpayd
	Tax Tables	Wpaye, wpayec & wpayes
	PWX Departments	Wpdept
	Pension Groups	Wpngp
	Pension Payment Source	Wpnps
	Payroll Pension Scheme Payment	Wpnpy
	Payroll Pension Schemes	Wpnsc

	Profiles	Wprof
	SSP Qualifying Days Profile Details	Wsqddt
	SSP Qualifying Days Profile Header	Wsqdhr
	SSP/SMP Parameters	Wssmp
	SSP Tables	Wsspt
	Transactions	Wtran
	Payroll Views	Wview
Email Payslips	Employee Contacts	Wcontacts
System	Audit Log	Audlog
System database	Company Controls, System Preferences & User Controls	Seqco, seqsys & sequser

Personnel Processor

Role	Has access to	Table(s)
Personnel Processor	Absence Records	Habtrn
	Benefits	Hbenft
	Bank Holidays	Hbhol
	Discipline	Hdiscp
	Discipline Records	Hdtrn
	Ethnic	Hethnc
	Employee Pattern	Hewpr
	Job Details	Hjhtm
	Jobs File	Hjobs
	Marital Status File	Hmarrd
	Personnel Employees	Hname
	Personnel Options	Hrparm
	Salary History	Hsltrn
	Absence Reasons	Hsreas
	Training	Htrain
	Training Records	Htrtrn
	Pattern Headers	Hwkpat
	Pattern Details	Hwpatd
Payroll	Groups	Wgrup
	Employees	Wname
System	Audit Log	Audlog
System database	Company Controls, System Preferences & User Controls	Seqco, seqsys & sequser

POP Processor

Role	Has access to	Table(s)
POP Processor	Purchasing Department	Ddept
	Model Purchase Orders Headers and Details	Dmhead & dmline
	Individuals	Dname
	Uncommitted Documents	Dodoc
	Purchase Orders Headers and Details	Dohead & doline
	Parameters	Dparm
	Requisition Headers	Drhead
	Requisition Lines	Drline
	Supplier Products	Dsprod
	Creditors History	Phist
	Supplier records	Pname
	Supplier Profiles	Ppfrls
	Supply Codes	Ppurch
	Supplier Terms Profiles	Pterms

Stock	Stock Profiles	Cfact
	Stock records	Cname
Import/Export	EC VAT Countries, Commodity Codes, Lookup Tables	Vcntry, vcomm & vlook
Purchase Ledger	VAT Periods	Zrcsl
System	Rates and Exchange Rates	Ztax & zchg
System database	Company Controls, System Preferences & User Controls	Seqco, seqsys & seuser

Purchase Processor

Role	Has access to	Table(s)
Purchase Processor	Purchase History	Hpanal
	Purchase History Options	Hpparm
	Purchase Allocations	Palloc
	Purchase Analysis	Panal
	Supplier Attributes	Pcontattr
	Rectified Allocations and Transactions	Pdealloch & Pdealloct
	PIR Headers, Details and Matches to Purchase Orders	Phead, pline & pmatch
	Creditors History	Phist
	Purchase Lookups	Plook
	Supplier records	Pname
	Nominal Ledger Transfers	Pnoml
	Purchase Ledger Options	Pparm
	Supplier Profiles	Pprfls
	Supply Codes	Ppurch
	Reasons for holding	Preasn
	Supplier Terms Profiles	Pterms
	Purchase Ledger Transactions	Ptran
	Purchase Ledger View	Pview
	EC VAT Countries, Commodity Codes, Lookup Tables	Vcntry, vcomm & vlook
Import/Export	EC VAT Countries, Commodity Codes, Lookup Tables	Vcntry, vcomm & vlook
Purchase Ledger	VAT Periods	Zrcsl
System	Contacts, Notes, Rates and Exchange Rates	Zcontacts, Znotes, Ztax & zchg
System database	Company Controls, System Preferences & User Controls	Seqco, seqsys & seuser

Sales Processor

Role	Has access to	Table(s)
Sales Processor	Sales History	Hsanal
	Sales History Options	Hparm
	Sales Allocations	Salloc
	Sales Analysis	Sanal
	Customer Attributes	Scontattr
	Rectified Allocations and Transactions	Sdealloch & sdealloct
	Debtors History	Shist
	Credit Management Correspondence Content	Sladlett
	Debt Management Options	Sladlopts
	Credit Management Diary Options	Slcmacts
	Sales Lookups	Slook

	Customer records	Sname
	Nominal Ledger Transfers	Snoml
	Sales Ledger Options	Sparm
	Customer Terms Profiles	Sterms
	Reason for Dispute	Sreasn
	Customer Profiles	Spfrls
	Sales Codes	Ssale
	Sales Ledger Transactions	Stran
	Sales Ledger View	Sview
	Sales Groups	Swxsgrp
Invoicing/SOP	Headers	lhead
	Transactions	ltran
Import/Export	EC VAT Countries, Commodity Codes, Lookup Tables	Vcntry, vcomm & vlook
Sales Ledger	VAT Periods	Zrcsl
System	Contacts, Notes, Rates and Exchange Rates	Zcontacts, Znotes, Ztax & zchg
System database	Company Controls, System Preferences & User Controls	Seqco, seqsys & sequser

Stock Processor

Role	Has access to	Table(s)
Stock Processor	Batch Numbers and Serial Numbers	Cbatch & cbatse
	Carriers	Ccarr
	Stock Categories	Ccatg
	Price Details	Cdetl
	Price Discount Matrix	Cdisc
	Stock Profiles	Cfact
	Goods Received Notes Headers, Details and Matches to Purchase Orders	Cghead, cgline & cmatch
	Historical Stock	Chval
	Price List	Clist
	Stock Landed Costs Groups	CIndcg
	Stock Landed Costs Types	CIndct
	Stock Items	Cname
	Nominal Ledger Transfers	Cnoml
	Stock Name Extra	Cnxtra
	Stock Options	Cparm
	Return to Vendor Header and Detail Lines	Crhead & crline
	Stock Serial Numbers	Cserno
	Split Batches	Csplit
	Stock per Warehouse	Cstwh
	Stocktake Profile	Ctakepr
	Stock Traceable Items	Ctitem
	Tracking of Items	Ctrack
	Stock Transactions	Ctran
	Stock Transaction Extra	Ctxtra
	Stock View	Cview
	Warehouses	Cware
Import/Export	EC VAT Countries, Commodity Codes, Lookup Tables	Vcntry, vcomm & vlook
Sales Ledger	VAT Periods	Zrcsl

System	Notes, Rates and Exchange Rates	Zcontacts, Znotes, Ztax & zxchg
System database	Company Controls, System Preferences & User Controls	Seqco, seqsys & seuser

System Processor

Role	Has access to	Table(s)
System Processor	Company Controls	Zcodat
	Contacts	Zcontacts
	Notes	Znotes
	Spooler	Zspool
Sales Ledger	Customer Correspondence History	Zpubhist
	VAT Periods	zrcsl
System	VAT Rates	Ztax
	VAT Submissions	Zvonline
	VAT Transactions	Zvtran
	Exchange Rates	Zxchg
Import/Export	EC VAT Countries, Commodity Codes, Lookup Tables	Vcntry, vcomm & vlook
System database	BACS Bank	Bacsbank
	BACS Format	Bacsformat
	BACS Styles	Bacsstyle
	Payroll AO Rates	Seqaort
	Company Controls	Seqco
	Report email fields	Seqefld
	Report email groups	Seqegrp
	Report email details	Seqerpt
	Seqerr (Opera pre-defined error messages)	Seqerr
	User Favourites	Seqfaves
	Persistence Info	Seqforms
	Notification Group	Seqgrp
	User Locks	Seqlock
	Notification Details	Seqmsgdist
	Nav Groups	Seqnavgrps
	Notification	Seqnotif
	People Table	Seqpeopl
	PWX PSS Notification	Seqpwxns
	Report Manager	Seqrepm
	Report Printer Table	Seqrplay
	Company Services	Seqservice
	System Preferences	Seqsys
	System User Role Map	Sequrmap
	User Controls	Seuser
	Notification User	Sequsrgrp

System Admin

The System Admin account has access to all data and system tables, including the frw (system-controlled) tables. The table below lists the specific additional tables they have access to.

Role	Has access to	Table(s)
System Admin	Countries	Frwcntry
	Misc. Statutory Sets	Frwmisc
	NI Age Band	Frwniage
	NI Rates & Bands	Frwnitb
	Min and Living Wages	Frwnml

	Auto Enrolment Sets	Frwnrol
	PAYE Rates	Frwpaye
	Welsh PAYE Rate	frwpayec
	Scottish PAYE Rates	Frwpayes
	Pension Age Bands	Frwspage
	Stat Payment Setting	Frwssmp
	SSP Rates & Bands	Frwsspt

3. Authorised Permissions

3.1. If the Opera User is not Found

If the provided credentials cannot be mapped to an Opera user, no permissions will be granted to query any database or table via the Data Connector.

3.2. Once the Opera User is Known

The Data Connector knows:

- What companies they have access to in all systems.
- What tables (via assigned Roles) they have access to.

When running an OData query, if the user does not have permission to either the database or the relevant table(s), an HTTP 403 – “Forbidden”, or HTTP 401 – “Unauthorized” status will be returned.

If the user has permissions for both the database and the relevant table, an HTTP 200 – “OK” status will be returned, along with the data.

4. The Data Connector functionality

In this stage, we look at the core functionality of the Data Connector. You can demonstrate the Data Connector using any application that supports OData feeds. The easiest application to showcase the Data Connector is Excel as many people are familiar with it. You can then move on to more popular apps, such as Power BI etc. The URLs should be pre-prepared, and a range of examples should be considered, including a link to the base whole company and more “tailored” statements.

4.1. OData Feed

OData Feeds allow for various manipulations using supported syntax. Although there are a myriad of options for OData feed commands, remember that you can still manipulate the data after the feed(s) has been established, in features such as Power Query, Transforming Data or Data Modelling etc.

NOTE: Remember that the Data Connector will provide the data in a user- friendly format (understandable dictionary). It may be worth considering selecting all the required data and manipulating post extractions. It is recommended to analyse the best method for your report and dashboard designs, whether it be engineering the OData Feed URL, manipulating the data post extraction with tools such as Power Query, Transforming Data or Data Modelling etc. or a combination of both!

OData (Open Data Protocol) is an ISO/IEC approved, OASIS standard that defines a set of best practices for building and consuming RESTful APIs. OData helps you focus on your business logic while building RESTful APIs without having to worry about the various approaches to define request and response headers, status codes, HTTP methods, URL conventions, media types, payload formats, query options, etc. OData also provides guidance for tracking changes, defining functions/actions for reusable procedures, and sending asynchronous/batch requests.

OData RESTful APIs are easy to consume. The OData metadata, a machine-readable description of the data model of the APIs, enables the creation of powerful generic client proxies and tools.

~End of Document ~